



FULL SAIL UNIVERSITY

# HOUSING HANDBOOK

for International Students



*fullsail.edu*



#### IMPORTANT INFORMATION

*The material enclosed in this guide is provided by Silver City Partners, Ltd. for informational purposes only and should not be construed as a recommendation or endorsement of any particular facility, management, staff, or service.*

*The information in Full Sail University's Housing Handbook for International Students is for informational purposes only. All prices mentioned in this guide are estimates and may change at any time, without notice.*

*All real estate advertised herein is subject to the Federal Fair Housing Act, which makes it illegal to advertise any preference, limitation or discrimination based on race, color, religion, sex, handicap, familial*

*status or national origin or intention to make any such preference, limitation or discrimination. We will not knowingly market any rental property which is in violation of the law. All persons are hereby informed that all dwellings contained herein are available on an equal opportunity basis.*

*Prices quoted are subject to change at the discretion of apartment owner/managers and are provided for information purposes only. Silver City Partners, Ltd., a licensed real estate broker, does not make any representations as to opinions and facts. All terms and conditions of rentals are subject to change. Projected costs of utilities are approximate and should not be construed as guaranteed monthly amounts when calculating monthly expenses as individual use will vary.*

# TABLE OF CONTENTS

PAGE 02 Choosing an Apartment

PAGE 06 Housing Checklist

PAGE 08 Roommates

PAGE 10 Frequently Asked Questions

PAGE 12 International-friendly Apartments

Welcome to Full Sail University! This relocation guide provides detailed information about your move to the Winter Park area, including international-friendly apartments, setting up utilities, finding a roommate, and more.

We know that international students have unique challenges when it comes to moving resources, so this guide should hopefully address many of your questions and concerns.

[liaisons@fullsail.com](mailto:liaisons@fullsail.com)





# CHOOSING AN APARTMENT

Full Sail does not have on-campus housing, but is located close to many area apartment complexes. You have the option of living alone, or you can find a roommate. If you want a roommate, your International Liaison can provide you with a list – and you can be added to this list by answering the questions on page 9.

The apartments by Full Sail often include amenities such as swimming pools, tennis courts, laundry facilities, exercise facilities, and barbecue areas. The amenities for each complex are listed with their prices and layout information in this guide.



## Visiting Apartment Complexes

If you have plans to visit Full Sail's campus, this is also a great opportunity to visit some of the apartment complexes you may be interested in. Apartments are available for viewing during normal business hours, usually without an appointment, and the office staff will be happy to show you the apartments and property amenities.



## Applying for an Apartment and Signing a Lease

You will be required to sign a lease in order to move into your apartment. The term of this contract is normally 12 months in length, although shorter or longer leases may be available. Because you are legally and financially obligated to your apartment for the length of the lease, you will want to be sure that you pick your apartment and roommates very carefully. Ending your lease early can be very expensive, due to fees and loss of deposits, and should be avoided whenever possible.



## Apartment Qualifications and Fees

You will need to qualify for your apartment. The apartment complex will ask you to provide:

- A copy of your passport
- Your I-20
- Your visa
- A bank letter demonstrating adequate savings or income

You will also be expected to pay for your application fees and a security deposit at the time you apply for your apartment. Deposits for international students are normally equal to one or two month's rent. This is because apartment complexes are unable to perform credit and background checks on international students who do not have a Social Security number.



## Utilities and Furniture

In most cases, utilities and furniture are not included in the cost of your rent. You will need to add electricity, water/sewer and Internet services for your apartment, and may choose to add television and landline telephone service.

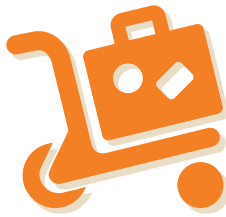
If these utilities are not already included in the cost of your rent, you have the option of setting up your utilities on your own with each individual utility company. Many utility companies expect customers to pay a deposit to set up services, based on a credit check. Since most international students do not have a U.S. Social Security number, international students are often required to provide higher security deposits. In the Frequently Asked Questions section, we have provided information on a company that can combine those costs into a single bill if that's something you are interested in. For the estimated cost of utilities, the utility company would be able to tell you the average power usage for a particular unit over the last 12 months. You may contact the utility company directly to obtain this information.

The apartments near Full Sail usually include a refrigerator, a stove/oven, and a dishwasher, and some may include a washer and dryer. Most do not include furniture. You have the option of either renting or purchasing furniture for your apartment – we normally recommend Cort furniture ([www.cort.com](http://www.cort.com)) for rentals, and area stores such as Walmart, IKEA, and Target provide affordable options if you want to purchase your own.



## Renters Insurance

Many apartment complexes require their tenants to carry a certain amount of renters insurance coverage. This will not only protect your belongings from theft, but also from natural disasters such as flood or fire. Remember, the apartment complex is not liable for your personal belongings under any circumstances.



## Moving In

Prior to moving in, you should be prepared to show your identification, sign the lease, pay any necessary fees, and pay the first month's rent (which may be prorated for the balance of the month). Depending on your move-in date, the second month's rent may be required as well.

You will also sit with a leasing agent to review and sign your lease. This process takes approximately 30 to 60 minutes.



## Apartment Rules and Regulations

Each apartment complex has published rules and regulations. You may be evicted if you do not make your rent payment or fail to comply with the rules and regulations stated in your lease paperwork. An eviction from any property will prevent you from renting at another apartment complex later on.

If for any reason you feel you may need to terminate your lease, please contact the leasing office at your apartment. Prior to moving out, you must give at least 30 to 60 days written notice to your apartment manager that you plan to vacate the apartment. It will be your responsibility to return the keys to their office before you leave.

We strongly suggest that you request a walk-through of your apartment with a representative of the property to ensure that all is in order. This will help to determine if anything needs to be fixed in order for you to receive all or a portion of your security deposit back.

You may also need to make arrangements to disconnect your various utilities and provide the companies with a forwarding address.







# HOUSING CHECKLIST

- 1 .....
  - ☐ Read this handbook and contact your International Liaison to discuss potential apartment complex options – as well as any other questions related to your transition.
- 2 .....
  - ☐ Complete and email the roommate profile information (see page 9) to your International Liaison if applicable.
- 3 .....
  - ☐ Discuss your living needs with your International Liaison.
- 4 .....
  - ☐ Contact your apartment complex to complete the application process. They will tell you what documentation they require and help you determine your move-in date. All of your deposits and paperwork will be submitted directly to the apartment complex; your apartment is not reserved until you have submitted your application and necessary fees.
- 5 .....
  - ☐ Contact your International Liaison to discuss your plans to arrive in Orlando, including how you will get from the airport to your hotel or apartment.
- 6 .....
  - ☐ Update your International Liaison with your finalized travel plans to arrive in Orlando.
- 7 .....
  - ☐ The week before you arrive, contact your apartment complex to verify that everything is in order for you to move in. If you do not have housing arrangements in place before you arrive, you will need to make arrangements to stay in a hotel.
- 8 .....
  - ☐ Make arrangements for utilities and furniture for your apartment unless they are already included in the cost of your rent.

# ROOMMATES

You always have the option of living alone; however, if you are interested in finding a roommate, Full Sail will be happy to assist you. Your I-20 must be issued before you can receive the roommate list. As soon as you receive it, please submit answers to the questions on the bottom of the following page and submit to your International Liaison to receive a copy of the roommate list.



Looking for  
a Roommate?

Email this information to  
your International Liaison.

## Suggestions for Interviewing Potential Roommates

Because you will choose your own roommate, it is important for you to ask a lot of questions to anyone you are considering as a potential roommate. Discuss anything else you can think of that might compromise a friendly living relationship. Whenever possible, we suggest that you try to make initial contact with a potential roommate by phone and then follow up with them and interview them thoroughly using an online video chat service. Using email alone is not an effective tool to find out about a potential roommate.

If you are considering moving in with a student who has already started classes, you should keep the following in mind:

- You will need to be added to the lease. All apartment complexes require that everyone who lives in the apartment be on the lease. If the complex finds that you are living in the apartment but you are not on the lease, then you will be given a short amount of time to apply and be approved to live there. Failure to do so can result in eviction of everyone in the apartment.
- Moving in with a current student means that your roommate is likely to graduate before you. This means that at some point during your studies, you will likely need to find a new roommate and possibly a new apartment. This process can be time-consuming and challenging when you are currently taking classes.

## International Student Roommate Profile

**Send this information to your International Liaison via email:**

Name:

Email:

Skype username:

Age:

Phone number:  (include Country Code)

Gender:

Country of origin:

Have you already secured an apartment?

Degree program of study:

How often do you study?  (often/occasionally/never)

Do you have a car available?

Are you ok with pets?

Do you smoke, or drink alcohol?

If you are a smoker, would you be willing to smoke outside?

If you are not a smoker, are you willing to live with a smoker?

What's your preference for TV/music volume?  (loud/soft)

How neat and clean do you like to keep your surroundings?  (very neat/somewhat neat/messy)

If you consider yourself messy, are you willing to keep the common areas clean?

Do you consider yourself a partier?

How often do you entertain friends at home?  (often/occasionally/never)

How often do you go out for fun?  (often/occasionally/never)

List any hobbies/habits you have, sports/instruments you play, musical tastes, or any other unique information about yourself:

Additional comments:

**To access a digital version of this form, please visit:**  
[fullsail.edu/admissions/international/roommate-profile](https://fullsail.edu/admissions/international/roommate-profile)



# FREQUENTLY ASKED QUESTIONS

## QUESTION 1

- ?** ***What is the average living expense amount for living alone?  
What about with a roommate?***

**Answer:** Your cost of living can vary greatly based on your specific needs and options.  
Please contact your International Liaison to get a basic idea of area living expenses.

## QUESTION 2

- ?** ***Does a student have to wait until they receive their I-20 to start  
considering housing options?***

**Answer:** No – you should start your housing process as soon as possible. However, a student's I-20  
needs to be sent before you can be added to the roommate list.

## QUESTION 3

- ?** ***Does a student need to have a vehicle to attend school?***

**Answer:** No, having a car is not necessary in order to attend school. Any student who does not have  
a vehicle should live within 1.5 miles of campus so that they can walk or bike to school.  
Keep in mind that the public transportation system, LYNX, does not operate 24 hours a day.

## QUESTION 4

- ?** ***Where should I stay if my move in date is after my arrival in the U.S.?***

**Answer:** If your apartment has not been secured by the time of your arrival, you will need to  
establish a temporary option. The international liaison will be able to provide a listing  
of hotel recommendations.



## QUESTION 5

### ? ***Do students need to have their housing secured before coming to registration?***

**Answer:** While it is not required for a student to secure housing before coming to registration, it is strongly suggested that they do so for the following reasons:

- Securing an apartment early by submitting an application and a paying a hold fee is the best way for a student to ensure that they get his or her first apartment choice.
- Students need to provide a local address when they attend registration.
- Securing housing saves hotel costs. Also, there are no hotels that are within walking/biking distance of campus.
- Registration/orientation week is a very busy and hectic week for students. Participating in the required activities, meetings, and events during this week while trying to find and secure housing is a difficult task for any student, especially international students.
- Choosing a roommate may be challenging, since most students already have their housing and roommates secured before they arrive for registration.
- International students may need extra assistance to secure housing, because the process can be very different here as compared to the student's home country.

If you must wait until you come to campus to choose housing, you should arrive a week before registration so that you can take care of all of your housing arrangements before registration. You should also have hotel accommodations secured before you arrive.

## QUESTION 6

### ? ***How do international students set up their utilities?***

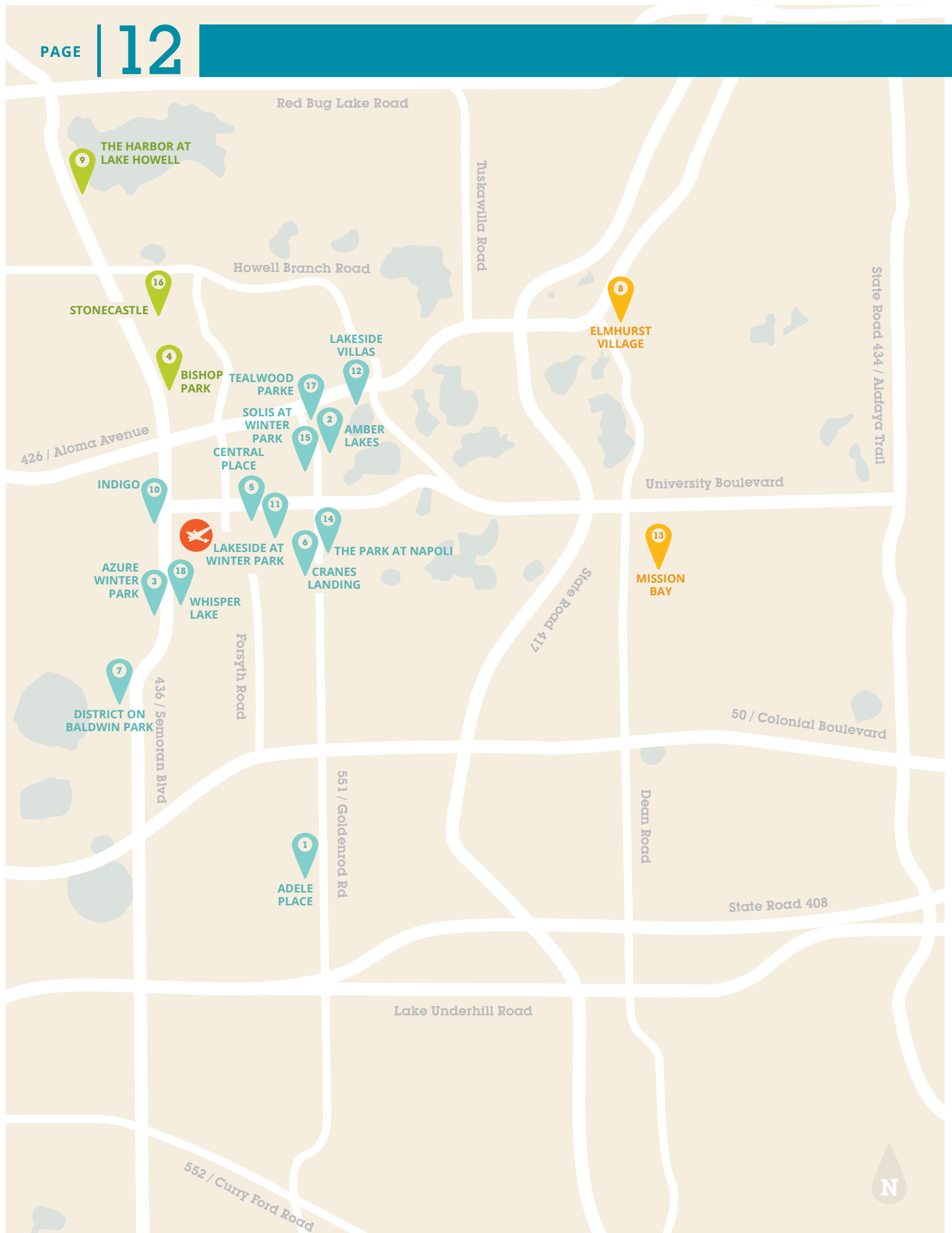
**Answer:** While international students can set up utilities directly through the utility companies, this will almost always result in a large deposit, because deposits are based on credit and international students do not usually have Social Security numbers upon entering the country.

The company PaySmartUSA offers an option of bundling utilities such as electric, Internet service, water and additional services into one monthly bill. For additional information, call 888.381.8020 or go to [www.PaySmartUSA.com](http://www.PaySmartUSA.com).

## QUESTION 7

### ? ***How can I find furniture for my apartment?***

**Answer:** You can either rent or buy furnishings for your apartment – ask your International Liaison for information.



# International-friendly APARTMENTS



Car icon indicates the apartment is within driving distance.



Bike icon indicates the apartment is within biking distance.



Walker icon indicates the apartment is within walking distance.

*The following list contains apartment complexes that are familiar with the needs of international Full Sail students:*

- |  |   |
|--|---|
| <p> <b>1. Adele Place</b> <br/>page 14</p>               | <p> <b>11. Lakeside at Winter Park</b> <br/>page 24</p> |
| <p> <b>2. Amber Lakes</b> <br/>page 15</p>               | <p> <b>12. Lakeside Villas</b> <br/>page 25</p>         |
| <p> <b>3. Azure Winter Park</b> <br/>page 16</p>         | <p> <b>13. Mission Bay</b> <br/>page 26</p>             |
| <p> <b>4. Bishop Park</b> <br/>page 17</p>               | <p> <b>14. The Park at Napoli</b> <br/>page 27</p>      |
| <p> <b>5. Central Place</b> <br/>page 18</p>             | <p> <b>15. Solis at Winter Park</b> <br/>page 28</p>    |
| <p> <b>6. Cranes Landing</b> <br/>page 19</p>            | <p> <b>16. Stonecastle</b> <br/>page 29</p>             |
| <p> <b>7. District on Baldwin Park</b> <br/>page 20</p>  | <p> <b>17. Tealwood Parke</b> <br/>page 30</p>          |
| <p> <b>8. Elmhurst Village</b> <br/>page 21</p>          | <p> <b>18. Whisper Lake</b> <br/>page 31</p>            |
| <p> <b>9. The Harbor at Lake Howell</b> <br/>page 22</p> |   |
| <p> <b>10. Indigo</b> <br/>page 23</p>                   |   |

*\*Prices are provided for reference only and may change based on availability, time of year, or other factors.  
Please call complex for current pricing.*

1

## Adele Place

7595 Sun Tree Cir., Orlando, FL 32807  
+1.407.282.1048 +1.407.658.9473 fax

### UTILITIES AND FEATURES

- Water/sewer/trash not included in rent
- Washer/dryer included in every apartment

### AMENITIES

- Resort-style pool with Wi-Fi
- Sports center with basketball court and X-Fit gym
- Dog park
- Tennis court
- 24-hour fitness center
- Internet café

### LOCATION

Located off of Goldenrod Rd., 4 miles south of campus

### APPLICATION FEES

Application fee waived for Full Sail students  
\$200 admin fee—waived for Full Sail students

### SECURITY DEPOSITS

Starting at \$200 (refundable)

### PET DEPOSITS / FEES

\$300–500 pet fee, up to 2 pets  
\$20–30/month pet rent

### ADDITIONAL INFORMATION

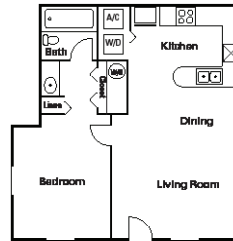
Administrative fees waived for Full Sail students  
Full Sail special—\$100 off first month  
Furniture rental available  
Credit cards accepted with a \$20 fee per transaction

### WEBSITE

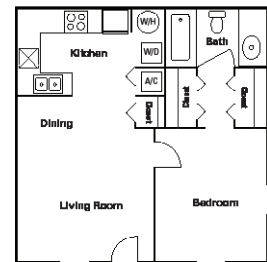
[www.adeleplaceorlando.com](http://www.adeleplaceorlando.com)  
[adele\\_place@aspensquare.com](mailto:adele_place@aspensquare.com)

### HOURS

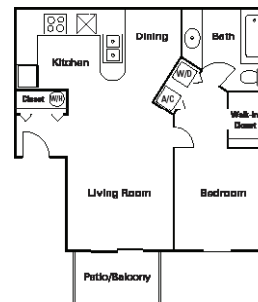
M–F 8 to 6, Sat 10 to 4



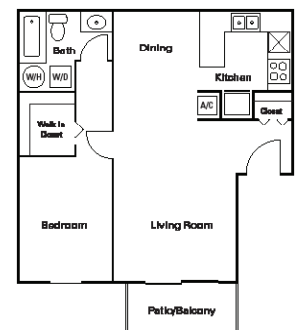
**ROYAL**  
1 Bedroom, 1 Bath  
550 sq. ft.  
*Starting at \$980*



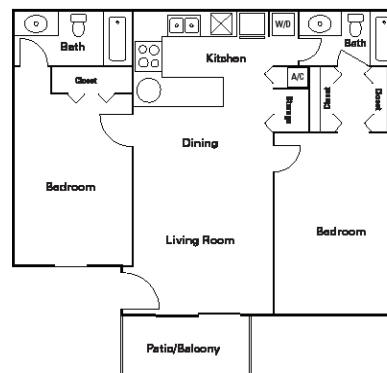
**CAROLINA**  
1 Bedroom, 1 Bath  
567 sq. ft.  
*Starting at \$1005*



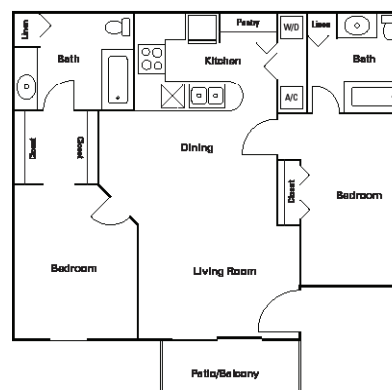
**BELLA**  
1 Bedroom, 1 Bath  
658 sq. ft.  
*Starting at \$1075*



**CAPE**  
1 Bedroom, 1 Bath  
792 sq. ft.  
*Starting at \$1100*



**TUSCANY**  
2 Bedroom, 2 Bath  
927 sq. ft.  
*Starting at \$1245*



**GRANDE**  
2 Bedroom, 2 Bath  
938 sq. ft.  
*Starting at \$1255*



2

## Amber Lakes

4755 North Goldenrod Road, Winter Park, FL 32792  
+1.407.678.2987 +1.407.678.1561 fax

### AMENITIES

- Poolside Wi-Fi
- Door-to-door valet trash pickup
- Brand new, state-of-the-art fitness center
- 2 swimming pools
- Optional covered parking
- Barbecue/picnic area
- Located on a 22-acre lake
- Lakefront living
- 2 tennis courts
- 4 on-site laundry facilities
- Select apartments remodeled with washer/dryer included
- Recreational Beach Area with Hammocks
- Dog Park
- Business Center

### LOCATION

Located off of Goldenrod Rd.,  
1.65 miles northeast of campus

### APPLICATION FEES

\$50 per person—waived for Full Sail students

### PET DEPOSITS / FEES

\$200 non-refundable pet deposit  
\$10/month pet rent  
Maximum 2 pets per apartment  
Breed restrictions apply  
No weight limit

### ADDITIONAL INFORMATION

Visa and MC accepted once approved

Lake views or pool views available in select units at an additional charge

### WEBSITE

[www.amber-lakes.com](http://www.amber-lakes.com)

### HOURS

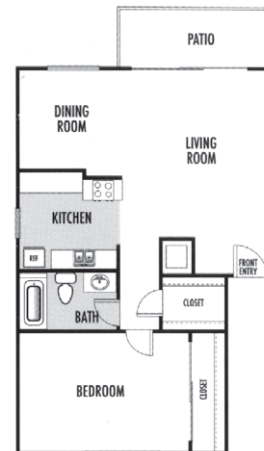
M-F 8 to 6, Sat 10 to 4, Sun Closed



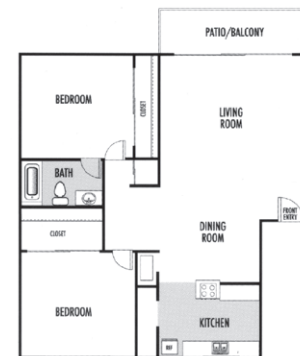
**THE MARINER**  
Studio  
500 sq. ft.  
**Starting at \$884-944**



**THE YACHT**  
1 Bedroom, 1 Bath  
533 sq. ft.  
**Starting at \$969-1059**



**REGATTA**  
1 Bedroom, 1 Bath  
721 sq. ft.  
**Starting at \$1034-1189**



**THE SCHOONER**  
2 Bedroom, 1 Bath  
912 sq. ft.  
**Starting at \$1159-1314**



**THE LAKESHORE**  
2 Bedroom, 2 Bath  
967 sq. ft.  
**Starting at \$1244-1399**



**THE DOCKSIDE**  
3 Bedroom, 2 Bath  
1189 sq. ft.  
**Starting at \$1520-1675**

4

## Azure Winter Park

3650 Summer Wind Drive, Winter Park, FL 32792  
+1.407.671.2400 +1.407.679.8249 fax

### AMENITIES

- Furnished housing available
- Xbox 360 and Wii game room
- Screened patios
- Outside storage
- 2 swimming pools
- Tennis court
- 24-hour fitness center
- Laundry facilities
- Pay your rent online at [my.mckinley.com](http://my.mckinley.com)
- Basketball court
- Washer/dryer in 2- and 3-bedroom units
- Water/sewer and trash not included in rent

### LOCATION

Located off of Semoran Blvd., 1.2 miles south of campus

### APPLICATION FEES

\$50 per applicant/guarantor; \$25 for Full Sail students; \$100 administration fee

### PET DEPOSITS / FEES

\$300 (non-refundable) for 1 pet  
\$500 (non-refundable) for 2 pets  
Large dogs welcome  
Breed restrictions apply  
Maximum 2 pets

### ADDITIONAL INFORMATION

Apply online at [www.mckinley.com/apply](http://www.mckinley.com/apply)  
Flexible move-in times available by appointment

### WEBSITE AND EMAIL

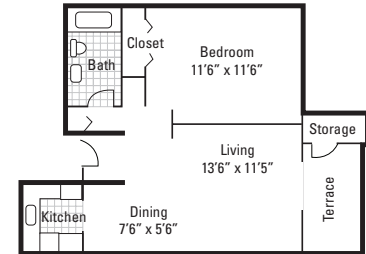
[www.mckinley.com/azure](http://www.mckinley.com/azure)  
[azure@mckinley.com](mailto:azure@mckinley.com)

### HOURS

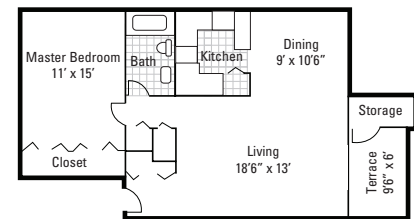
M-F 9 to 6, Sat 10 to 5, Sun By appointment\*

\*Open on BTS Sundays from 1 to 5

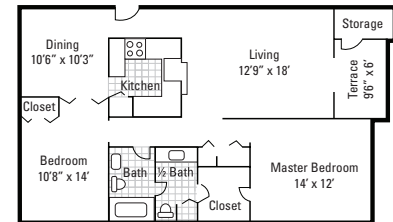
**STAGE MANAGER'S FLAT**  
1 Bedroom, 1 Bath  
538 sq. ft.  
**Starting at \$979**



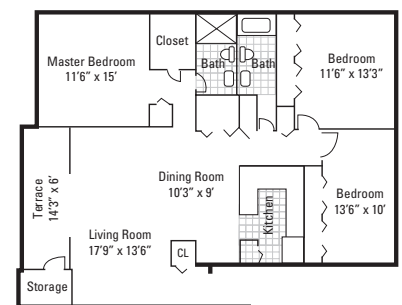
**DESIGNER'S SUITE**  
1 Bedroom, 1 Bath  
792 sq. ft.  
**\$1059**



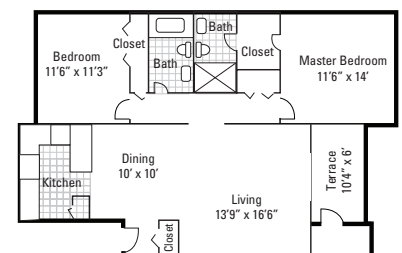
**PRODUCER'S SUITE**  
2 Bedroom, 1½ Bath  
1052 sq. ft.  
**\$1209**



**PRODUCTION SUITE**  
2 Bedroom, 2 Bath  
1049 sq. ft.  
**\$1289**



**DIRECTOR'S PAD**  
3 Bedroom, 2 Bath  
1394 sq. ft.  
**Starting at \$1489**



5

## Bishop Park

3250 Bishop Park Drive, Winter Park, FL 32792  
+1.407.679.7770 +1.407.679.7816 fax

### AMENITIES

- Fully renovated fitness center
- Washer/dryer included in all floor plans (except the Knight)
- Clubhouse with Wi-Fi access
- Game room
- Cyber cafe
- 2 private lakes
- Sparkling swimming pool with hot tub
- 24-hour laundry facility
- Basketball and volleyball courts
- Faxing and photocopy services
- Community events
- Garages on property
- Playground
- Roman bathtubs
- Ceiling fans in living rooms
- Screened porches
- Gated community
- Dog park
- BBQ/picnic areas
- Water/sewer not included in rent
- Recycling center

### LOCATION

Located off of Semoran Blvd., 1.25 miles north of campus

### APPLICATION FEES

\$50—waived for Full Sail students, \$50 for guarantors

### PET DEPOSITS / FEES

\$300 (non-refundable) pet fee per pet  
\$15/month pet rent  
Breed restrictions apply / No size restrictions  
Maximum 2 pets

### ADDITIONAL INFORMATION

\$35 (non-refundable) one-time gate card fee per card  
\$125/month fee for a detached garage  
Mention this ad for current move-in specials  
Lakeside views available in select units  
Renters insurance is required

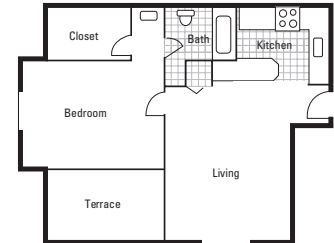
### WEBSITE AND EMAIL

[www.apartmentsinwinterpark.com](http://www.apartmentsinwinterpark.com)  
[bishoppark@bainbridgeRE.com](mailto:bishoppark@bainbridgeRE.com)

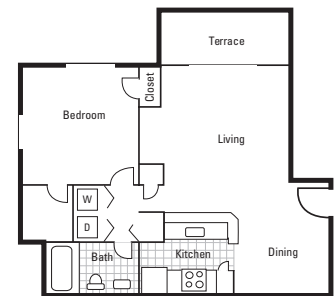
### HOURS

M-F 9 to 6, Sat 10 to 5, Sun Closed

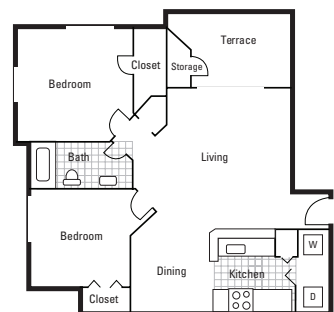
*\*Prices change daily based on current market availability. Please call apartment staff for current pricing. Refer to important information section at the front of the guide.*



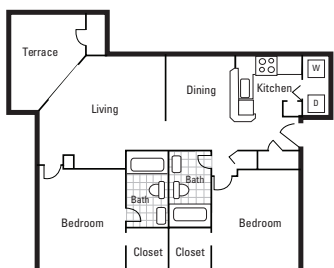
**THE KNIGHT**  
1 Bedroom, 1 Bath  
680 sq. ft.  
**Starting at \$915\***



**THE BISHOP**  
1 Bedroom, 1 Bath  
770 sq. ft.  
**Starting at \$1025\***



**THE CASTLE**  
2 Bedroom, 1 Bath  
920 sq. ft.  
**Starting at \$1275\***



**THE KING**  
2 Bedroom, 2 Bath  
1100 sq. ft.  
**Starting at \$1300\***



## Central Place

7000 University Boulevard, Winter Park, FL 32792  
+1.407.678.2662 +1.407.677.5591 fax

### AMENITIES

- 24-hour lounge with free Wi-Fi
- Computer lab
- 2 sparkling pools
- Newly renovated fitness center
- Washer/dryer connections in all 2- and 3-bedroom apartments
- 2 basketball courts on site
- 2 laundry facilities
- Patios or balconies

### LOCATION

Located on University Blvd., 0.25 miles east of campus

### APPLICATION FEES

\$50 per applicant

### PET DEPOSITS / FEES

\$200–400 (refundable) pet deposit

\$100–250 (non-refundable) pet fee

\$10/month pet rent

Maximum 2 pets; combined weight must be 100 lb. or less fully grown

Breed restrictions apply

### ADDITIONAL INFORMATION

Flat rate for water: \$45–55, depending on apartment size

Furniture rental available

### WEBSITE AND EMAIL

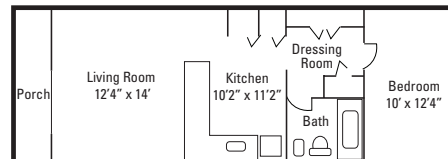
[centralplaceatwinterpark.com](http://centralplaceatwinterpark.com)  
[centralplace@robbinsre.com](mailto:centralplace@robbinsre.com)

### HOURS

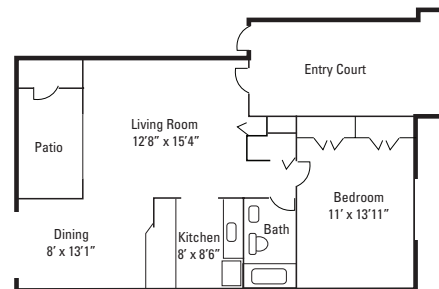
M–F 9 to 6, Sat 9 to 6, Sun Closed\*

\*Open 9 to 6 on BTS Sundays

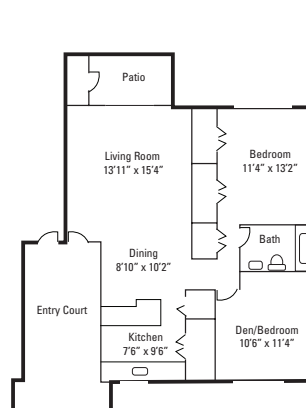
\*Prices change daily based on current market availability. Please call complex for current



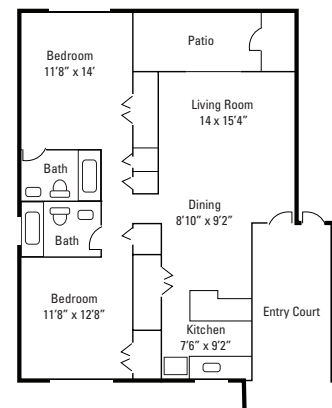
**A1**  
1 Bedroom, 1 Bath  
550 sq. ft.  
**\$830-985**



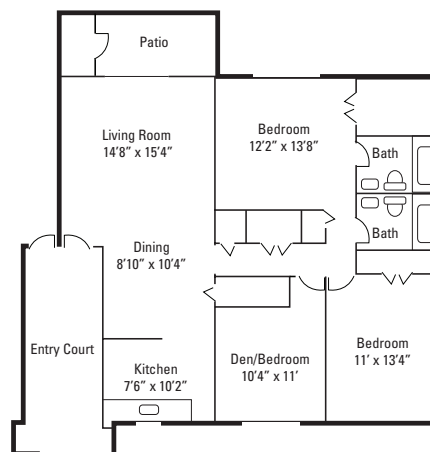
**A2**  
1 Bedroom, 1 Bath  
712 sq. ft.  
**\$890-1055**



**B1**  
2 Bedroom, 1 Bath  
911 sq. ft.  
**\$1030-1220**



**B2**  
2 Bedroom, 2 Bath  
987 sq. ft.  
**\$1170-1375**



**C1**  
3 Bedroom, 2 Bath  
1178 sq. ft.  
**\$1450-1660**



8

## Cranes Landing

3440 North Goldenrod Road, Winter Park, FL 32792  
+1.407.671.5585 +1.407.671.7411 fax

### AMENITIES

- 2 pools
- Indoor racquetball court
- Walleyball court
- Volleyball
- Clubhouse with pool table
- 24-hour fitness center
- Free Wi-Fi in clubhouse
- Lighted tennis court
- Pest control
- Washer/dryer
- in every unit
- Walk-in closets in every bedroom
- Large patios/balconies
- Ceiling fans in living rooms
- Breakfast bars in kitchens
- Water not included in the rent
- Jacuzzi

### LOCATION

Located off of Goldenrod Rd., 1.5 miles east of campus

### APPLICATION FEES

\$25 application fee per lease holder  
\$74 Administration fee required per apartment

### PET DEPOSITS / FEES

\$300 (non-refundable) pet fee for 1 pet  
\$500 (non-refundable) pet fee for 2 pets  
Maximum 2 pets per apartment  
Breed restrictions apply / No size restrictions  
No monthly pet rent

### ADDITIONAL INFORMATION

Renters insurance is required

### WEBSITE AND EMAIL

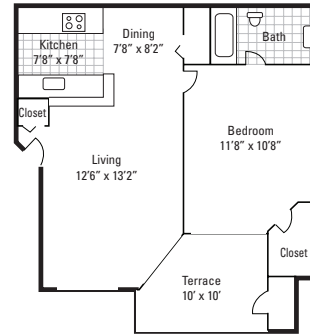
[www.craneslandingapts.com](http://www.craneslandingapts.com)  
[craneslandingleasing@mresmgmt.com](mailto:craneslandingleasing@mresmgmt.com)

### HOURS

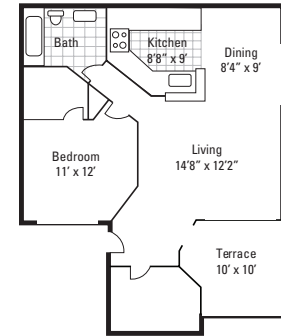
M-F 9 to 6, Sat 10 to 5, Sun Closed\*

\*open on BTS Sundays from 1 to 5

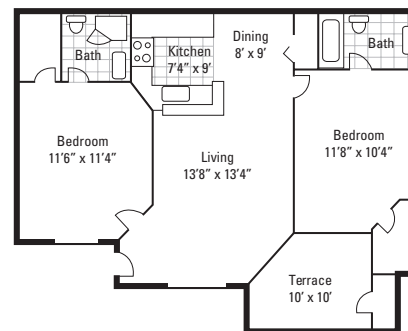
\*Prices change daily based on current market availability. Please call apartment staff for current pricing. Refer to important information section at the front of the guide.



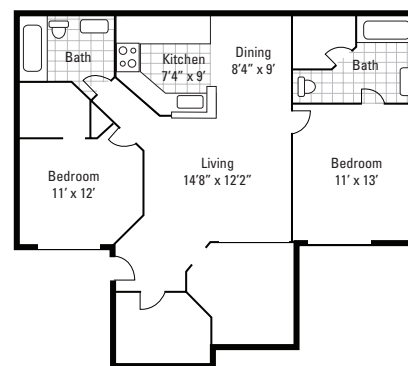
**1 BEDROOM**  
1 Bedroom, 1 Bath  
710 sq. ft.  
**Starting at \$950\***



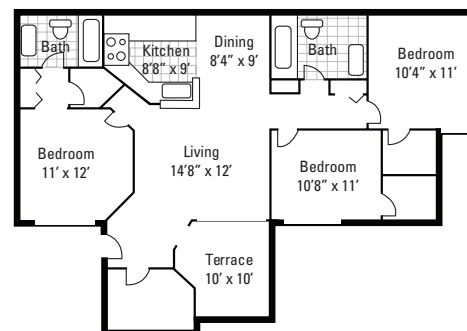
**1 BEDROOM**  
1 Bedroom, 1 Bath  
800 sq. ft.  
**Starting at \$968\***



**2 BEDROOM**  
2 Bedroom, 2 Bath  
950 sq. ft.  
**Starting at \$1098\***



**2 BEDROOM**  
2 Bedroom, 2 Bath  
1050 sq. ft.  
**Starting at \$1130\***



**3 BEDROOM**  
3 Bedroom, 2 Bath  
1200 sq. ft.  
**Starting at \$1399\***



## District on Baldwin Park

5590 Baldwin Park St., Orlando, FL 32807  
407.678.2100 407.678.2245 fax

### UTILITIES AND FEATURES

Water/sewer not included  
Washer/dryer in select units

### AMENITIES

- Stainless steel appliances, including microwave
- Ultramodern fixtures and lighting
- Wood-inspired flooring
- 3 swimming pools with resort-style sun decks
- Pet-friendly community with "bark park"
- 2 on-site laundry facilities
- Private entrance to Cady Way Trail
- 24-hour state-of-the-art fitness center
- 24-hour Internet café with Wi-Fi printer
- Granite countertops

### LOCATION

Located off of Semoran Blvd., 1.4 miles south of campus

### APPLICATION FEES

\$50 per person—waived for Full Sail students  
\$150 administrative fee

### SECURITY DEPOSITS

Based on resident's selection criteria

### PET DEPOSITS / FEES

\$300–500 pet fee, up to 2 pets  
\$15/month pet rent per pet  
Breed restrictions apply

### ADDITIONAL INFORMATION

Renters insurance is required

### WEBSITE AND EMAIL

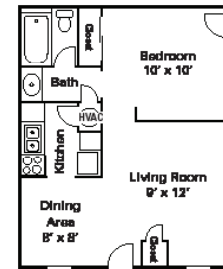
[baldwinpark@michaelsongroup.com](mailto:baldwinpark@michaelsongroup.com)

### HOURS

M–F 9 to 6, Sat 10 to 5, Sun 1 to 5

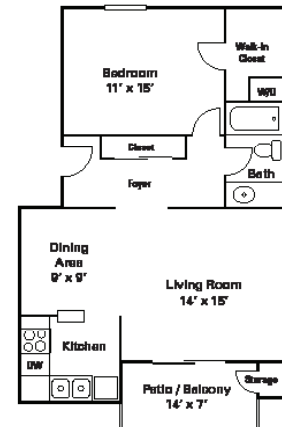
### EXECUTIVE STUDIO

1 Bedroom, 1 Bath  
518 sq. ft.  
Starting at \$887



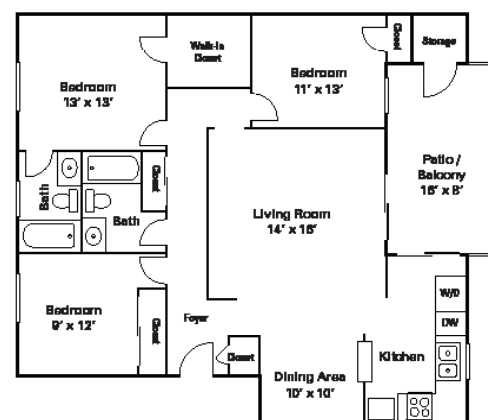
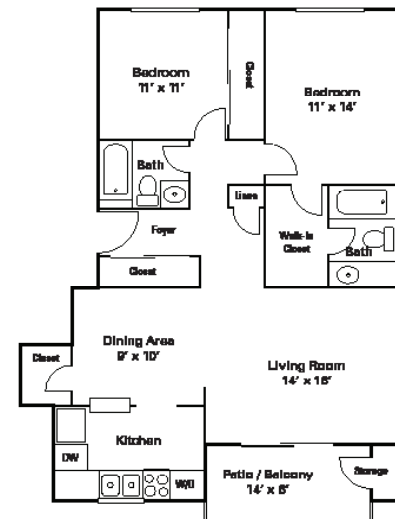
### DELUXE ONE BEDROOM

1 Bedroom, 1 Bath  
805 sq. ft.  
Starting at \$1105



### PARK AVENUE

3 Bedroom, 2 Bath  
1178 sq. ft.  
Starting at \$1354



### THREE BEDROOM

3 Bedroom, 2 Bath  
1263 sq. ft.  
Starting at \$1596

10

## Elmhurst Village

5691 Elmhurst Cir., Oviedo, FL 32765  
1.407.673.7033 1.407.673.1772 fax

### AMENITIES

- Sun-drenched pool with tanning deck
- Resident-controlled access gates
- Award-winning schools
- Billiard room
- Engaging community events
- Pet friendly
- 24-hour strength and cardio center
- Full-size washer/dryer in every home
- Eco-minded community with recycling
- Spacious walk-in closets
- Resident cyber center
- Valet trash service (additional charges apply)
- Designer kitchens with pantries
- Free Wi-Fi in clubhouse and pool area
- Water/sewer not included in the rent

### LOCATION

Located off of Aloma Ave., 4 miles northeast of campus

### APPLICATION FEES/SECURITY DEPOSITS

\$75 (non-refundable) application fee per person  
\$250 (non-refundable) administration fee  
\$250 (non-refundable) standard deposit on all apartments

### PET DEPOSITS/FEES

\$300 (non-refundable) pet fee  
\$200 (non-refundable) additional pet fee for second pet  
\$15/month pet rent  
Combined 100 lb. limit; breed restrictions apply

### ADDITIONAL INFORMATION

credit cards accepted with a 3% transaction fee

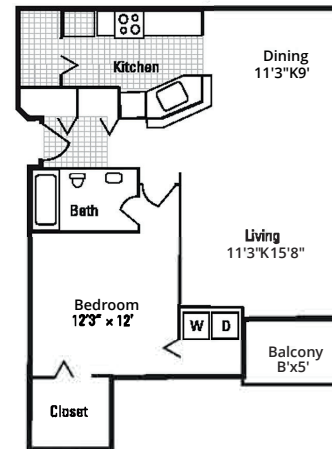
### WEBSITE AND EMAIL

[www.elmhurstvillage-apts.com](http://www.elmhurstvillage-apts.com)  
[elmhurstvillage@pinnacleliving.com](mailto:elmhurstvillage@pinnacleliving.com)

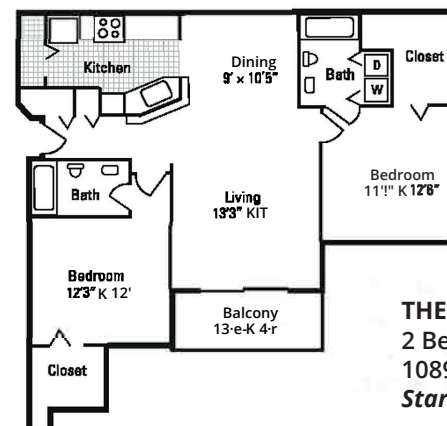
### HOURS

Mon-Fri 10 to 6, Sat 10 to 5, Sun Closed

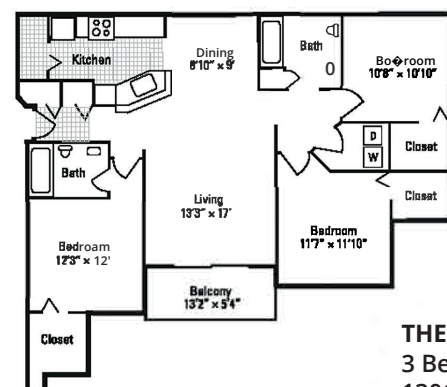
\*Prices change daily based on current market availability. Please call apartment staff for current pricing. Refer to important information section at the front of the guide.



**THE STERLING**  
1 Bedroom, 1 Bath  
846 sq. ft.  
Starting at \$1100\*



**THE LEXINGTON**  
2 Bedroom, 2 Bath  
1089 sq. ft.  
Starting at \$1300\*



**THE CAMBRIDGE**  
3 Bedroom, 2 Bath  
1306 sq. ft.  
Starting at \$1500\*

11

## The Harbor at Lake Howell

1280 Vinings Lane, Casselberry, FL 32707  
+1.407.657.8961 +1.407.657.9091 fax

### AMENITIES

- Gated community
- All units are newly renovated
- Stainless steel appliances, washer dryer
- Wood style flooring
- 24-hour fitness center
- Tennis court
- Sand volleyball court
- Storage units
- Laundry facility
- Nature trail
- 450-acre lake
- Playground
- Alarm system
- Spa
- Outdoor kitchen
- Private boat ramp
- 2 swimming pools
- Executive business center
- Barbecue grills and picnic area
- Screened patios and balconies
- Rent includes water, sewer, trash, pest control, and washer/dryer in unit

### LOCATION

Located off of Semoran Blvd., 4 miles north of campus

### APPLICATION FEES

\$75 per applicant and guarantor  
(multiple guarantors accepted)

### PET DEPOSITS / FEES

\$350 (non-refundable) 1st pet  
\$500 (non-refundable) 2nd pet  
Maximum 2 pets, \$20/month per pet

### ADDITIONAL INFORMATION

Amenities such as lake view, carport, garage, courtyard, vaulted ceiling, pool view, wood view, boat parking, and a variety of interior upgrade packages available for an extra fee

Call for move-in specials

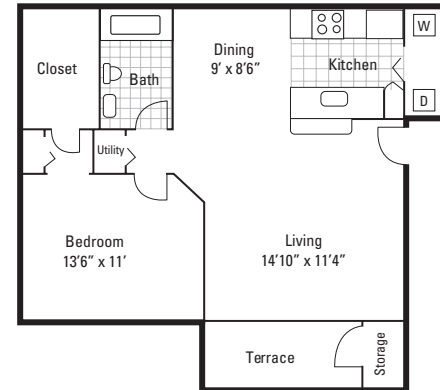
### WEBSITE AND EMAIL

[www.harboratlakehowell.com](http://www.harboratlakehowell.com)  
[lakehowell@cortlandpartners.com](mailto:lakehowell@cortlandpartners.com)

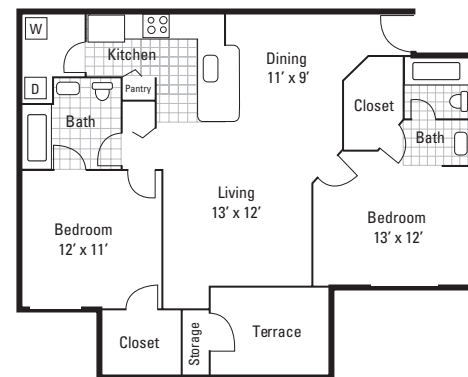
### HOURS

M-F 9 to 6, Wed 11 to 8, Sat 10 to 5, Sun 1 to 5

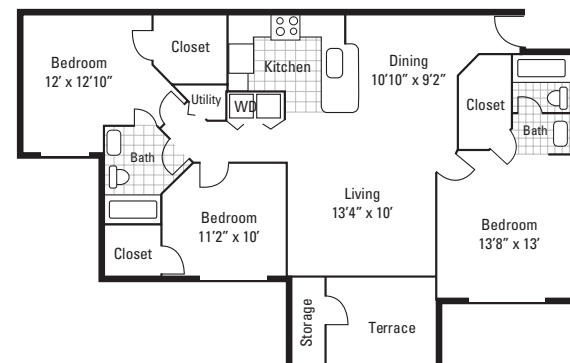
\*Prices change daily based on current market availability. Please call apartment staff for current pricing. Refer to important information section at the front of the guide.



**AMELIA**  
1 Bedroom, 1 Bath  
826 sq. ft.  
**Starting at \$1250\***



**BEECHNUT**  
2 Bedroom, 2 Bath  
1140 sq. ft.  
**Starting at \$1400\***



**DESTINY**  
3 Bedroom, 2 Bath  
1330 sq. ft.  
**Starting at \$ 1610\***

12

## Indigo

220 South Semoran Boulevard, Winter Park, FL 32792  
+1.407.677.5715 +1.407.677.0451 fax

### AMENITIES

- Free utilities (excluding phone/cable/Internet); one check pays all
- Washer/dryer included
- Furnished apartments available
- Recording studio
- Recycling area
- Bicycle parking throughout
- 3 sparkling pools
- 2 tennis courts
- Sand volleyball court
- Resident online portal
- Game room access with Xbox and Wii
- Fitness center access

### LOCATION

Located at the intersection of University Blvd. and Semoran Blvd., less than 0.25 miles from campus

### APPLICATION FEES

\$25 per applicant or guarantor

### PET DEPOSITS / FEES

Pet friendly / Large dogs welcome  
\$300 pet fee for 1 pet / \$500 pet fee for 2 pets  
Breed restrictions apply

### ADDITIONAL INFORMATION

Call for specials  
Apply online at [www.mckinley.com/apply](http://www.mckinley.com/apply)  
Now accepting reservations for 2016 for \$125

Second-floor units with screened-in patios available for an additional \$30/month

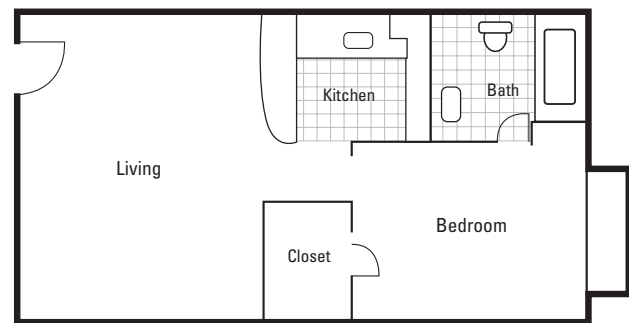
### WEBSITE AND EMAIL

[www.mckinley.com/indigo](http://www.mckinley.com/indigo)  
[indigo@mckinley.com](mailto:indigo@mckinley.com)

### HOURS

M–F 9 to 6, Sat 10 to 5, Sun By appt.\*

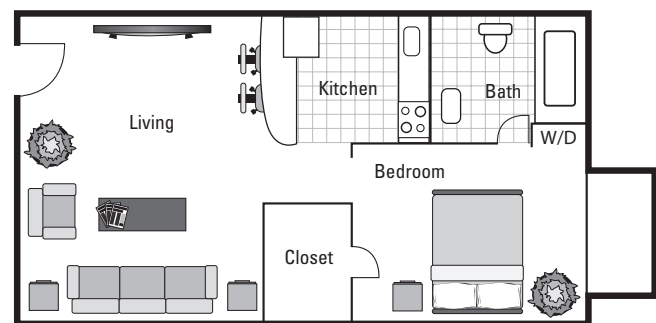
\*Open on BTS Sundays from 1 to 5



#### 1 BEDROOM—UNFURNISHED

501 sq. ft.

Starting at \$1159



#### 1 BEDROOM—FURNISHED

501 sq. ft.

Starting at \$1259

13

## Lakeside at Winter Park

3935 Sutton Place Boulevard, Winter Park, FL 32792  
+1.407.657.2299 +1.407.657.0295 fax

### AMENITIES

- 24-hour gated community
- 24-hour state-of-the-art fitness center
- Washer/dryer included in the Beechnut and Destiny floor plans
- 2 sparkling pools
- Dog park
- Every unit includes: two-tone paint, patio with storage, walk-in closets, breakfast bar, designer ceiling fans, tile backsplash, microwave
- 24-hour emergency maintenance
- Business center with high-speed Internet
- Water/sewer not included in rent

### LOCATION

Located on University Blvd., approximately 0.25 miles east of campus

### APPLICATION FEES

\$150 per household

### PET DEPOSITS / FEES

\$350 and up (non-refundable)  
Breed restrictions apply / No size restrictions  
Maximum 2 pets  
\$15/month pet rent per animal

### ADDITIONAL INFORMATION

\*Individual leases: Rent by the room; includes water/sewer, furniture, and electricity (\$70 cap per person per month)

Additional amenities available in select units include: wood-plank flooring,  
lake views and stainless appliances (additional charges may apply)

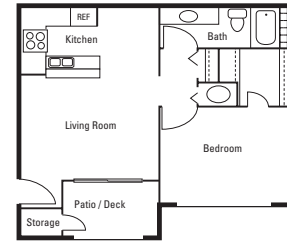
### WEBSITE AND EMAIL

[www.lakesideatwinterpark.com](http://www.lakesideatwinterpark.com)  
[lakesideleasing@radcoliving.com](mailto:lakesideleasing@radcoliving.com)

### HOURS

M-F 9 to 6, Sat 10 to 5, Sun Closed

\*Prices change daily based on current market availability. Please call apartment staff for current pricing. Refer to important information section at the front of the guide.



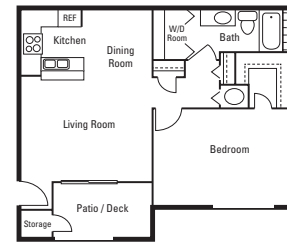
#### AMELIA

1 Bedroom, 1 Bath  
675 sq. ft.

**Starting at \$930\***

All-inclusive style

**\$1250/month utilities/furnished\***



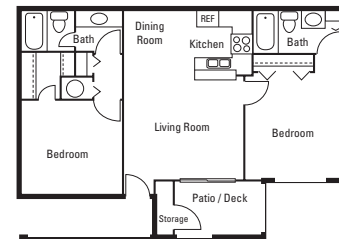
#### BEECHNUT

1 Bedroom, 1 Bath  
837 sq. ft.

**Starting at \$1050\***

Dorm Style:

**\$1350/month utilities/furnished**

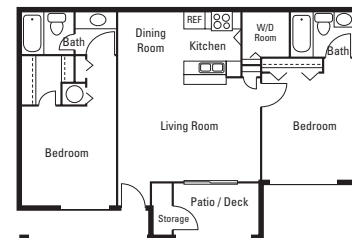


#### CAMELIA

2 Bedroom, 2 Bath  
940 sq. ft.

**Starting at \$1200\***

**\$1100/room for an individual lease**



#### DESTINY

2 Bedroom, 2 Bath  
1042 sq. ft.

**Starting at \$1315\***

**\$1150/room for an individual lease**



14

## Lakeside Villas

7950 Shoals Drive, Orlando, FL 32817  
+1.407.678.2223 +1.407.678.7722 fax

### AMENITIES

- 2 sparkling resort-style pools
- Poolside cabanas and fire pit
- State-of-the-art fitness center
- Lakeside living w/fishing dock and boat launch
- Basketball court and lighted tennis courts
- 24-hour laundry facilities
- Next to bike paths and park
- Renovated units available
- Walk-in closets
- Screened patios or balconies
- Poolside Wi-Fi
- Built-in stainless steel BBQ area
- Water/sewer not included in rent

### LOCATION

Located near the intersection of Aloma Ave. and Hall Rd., 2 miles northeast of campus

### APPLICATION FEES

\$50 application fee  
\$210 administration fee

### PET DEPOSITS / FEES

\$350 (non-refundable) pet fee per pet  
2-pet limit, weight up to 45 lb.  
Breed restrictions apply

### ADDITIONAL INFORMATION

Washer/dryer connections available in select units

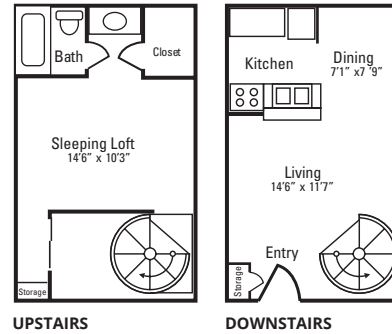
### WEBSITE AND EMAIL

[www.lakesidevillaapt.com](http://www.lakesidevillaapt.com)  
[lakesidelease@jrk.com](mailto:lakesidelease@jrk.com)

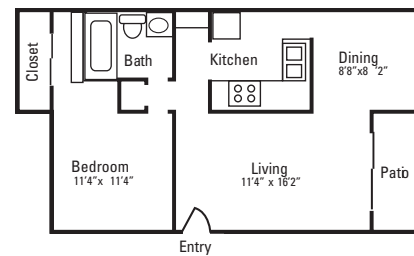
### HOURS

M-F 9 to 6, Sat 10 to 5, Sun Closed  
Summer Hours 9 to 7

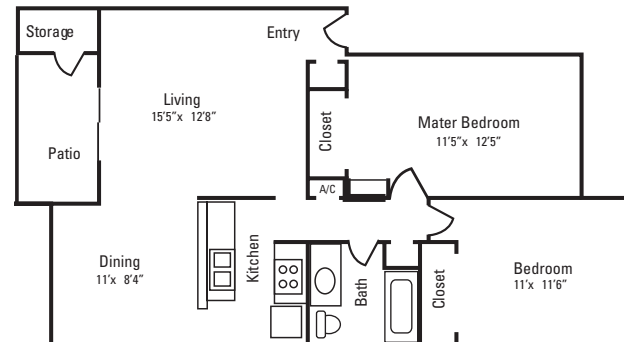
\*Prices change daily based on current market availability. Please call apartment staff for current pricing. Refer to important information section at the front of the guide.



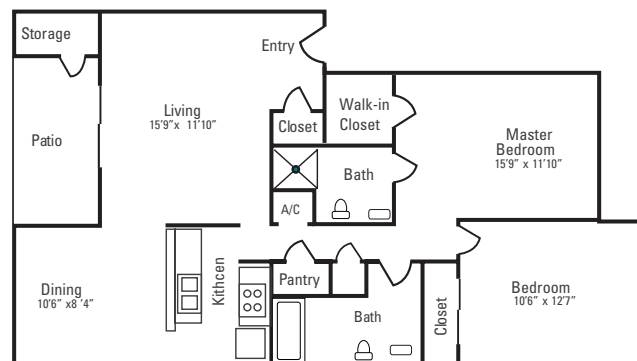
**THE CATALINA**  
1 Bedroom-Loft  
700 sq. ft.  
**Starting at \$1005\***



**THE RIVERA**  
1 Bedroom  
700 sq. ft.  
**Starting at \$945\***



**THE CAYMAN**  
2 Bedroom, 1 Bath  
925 sq. ft.  
**Starting at \$1049\***



**THE CARIBBEAN**  
2 Bedroom, 2 Bath  
1040 sq. ft.  
**Starting at \$1133\***

15

## Mission Bay

3378 Mission Lake Drive, Orlando, FL 32817  
+1.407.679.6880 +1.407.679.3220 fax

### AMENITIES

- Fully equipped fitness center
- 2 lighted tennis courts
- Indoor air-conditioned racquetball court
- Sand volleyball court
- Waterfall pool
- Community activities
- Private garages available
- Florida sunrooms
- Private entrances
- Ceiling fans
- Interior storage
- Washer/dryer included in every unit
- Pets welcome
- Water/sewer not included in the rent

### LOCATION

Located off of University Blvd., 4 miles east of campus

### APPLICATION FEES

\$50 application fee and \$150 holding deposit  
(can be applied to administration fee)

\$50 application fee for cosigners

### PET DEPOSITS / FEES

\$300 (non-refundable) pet fee  
\$20/month pet rent per pet  
Breed restrictions apply  
Maximum 2 pets per unit

### ADDITIONAL INFORMATION

Renters insurance is required

Optional Features:  
Lake view \$20/month  
Wood view \$15/month  
Garage \$90/month

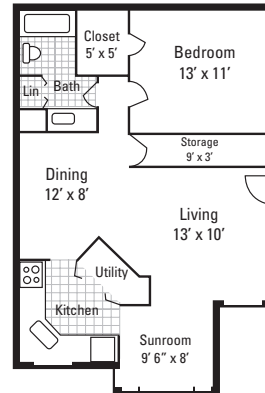
### WEBSITE AND EMAIL

[www.missionbayapts.com](http://www.missionbayapts.com)  
[missionbay@bainbridgeRE.com](mailto:missionbay@bainbridgeRE.com)

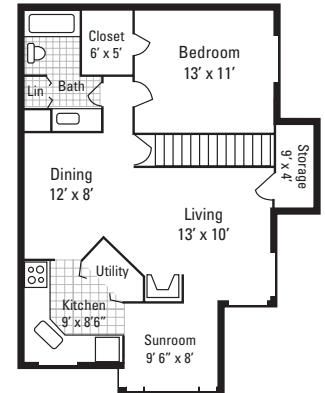
### HOURS

M-F 9 to 6, Sat 10 to 5, Sun Closed

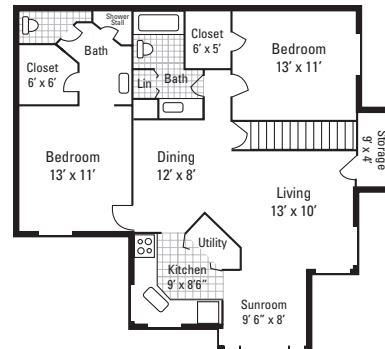
\*Prices change daily based on current market availability. Please call apartment staff for current pricing. Refer to important information section at the front of the guide.



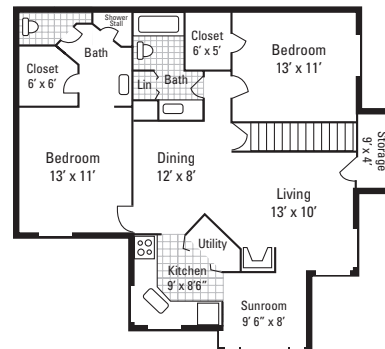
**THE AMELIA—DOWNSTAIRS**  
1 Bedroom, 1 Bath  
840 sq. ft.  
\$1132-1325\*



**THE AMELIA—UPSTAIRS**  
1 Bedroom, 1 Bath  
900 sq. ft.  
\$1132-1325\*



**THE BERMUDA—DOWNSTAIRS**  
2 Bedroom, 2 Bath  
1128 sq. ft.  
\$1390-1563\*



**THE BERMUDA—UPSTAIRS**  
2 Bedroom, 2 Bath  
1180 sq. ft.  
\$1390-1563\*

16

## The Park at Napoli

3733 N. Goldenrod Rd., Winter Park, FL 32792  
1.407.677.7070 1.407.657.5875 fax

### AMENITIES

- Gated 24 hours/day
- 2 sparkling pools with sun decks
- Heated spa
- Newly renovated 24-hour fitness center
- Lighted tennis court
- Playground
- Picnic areas
- 24-hour laundry facility
- Lush landscaping
- Full-size washer/dryer in all units
- Private patios/balconies
- Ceiling fans
- Walk-in closets
- Breakfast bar
- Wi-Fi at the clubhouse pool
- Water/sewer and pest control included in the rent

### LOCATION

Located on Goldenrod Rd., 1 mile east of campus

### APPLICATION FEES/ SECURITY DEPOSITS

\$150 application fee for household/  
\$200 administration fee

### PET DEPOSITS / FEES

\$325-500 (non-refundable) pet fee  
Up to 50 lb.  
\$15/month pet fee  
Breed restrictions apply  
Maximum 2 pets

### ADDITIONAL INFORMATION

Individual lease/all-inclusive style: Includes water/  
sewer, furniture, and electricity(\$70 cap per person  
per month)

### WEBSITE

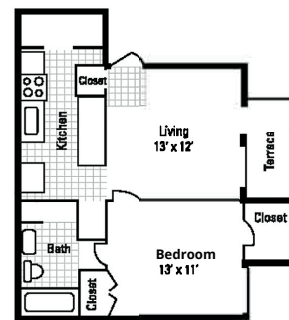
[www.theparkatnapoli.com](http://www.theparkatnapoli.com)

### HOURS

M-F 9to 6, Sat 10 to 5, Sun Closed\*

\* Open on BTS Sundays by appt. only

\*Prices change daily based on current market availability. Please call  
apartment staff for current pricing. Refer to important information  
section at the front of the guide.

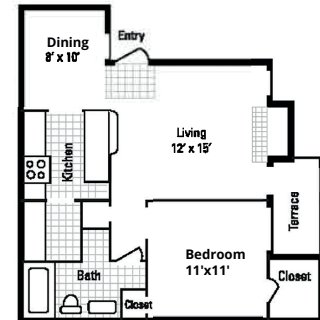


#### PALM

1 Bedroom, 1 Bath  
579 sq. ft.

Starting at **\$900\***

All-inclusive style:  
**\$1560/month utilities/  
furnished\***

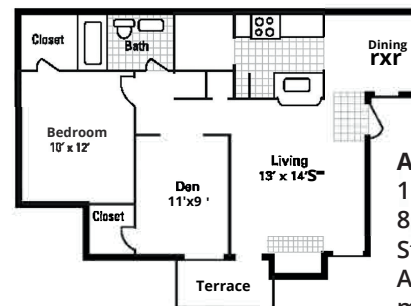


#### BEECHNUT

1 Bedroom, 1 Bath  
657 sq. ft.

Starting at **\$1010\***

All-inclusive style: **\$1652/  
month utilities/furnished\***

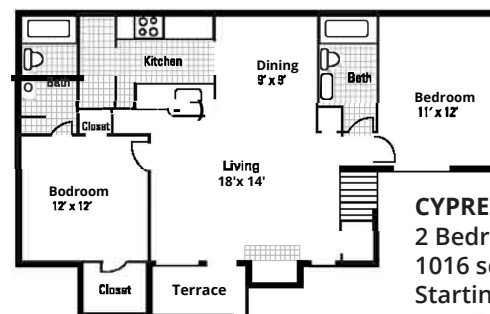


#### ASPEN/CAMELLA

1 Bedroom, 1 Bath w/Den  
808 sq. ft.

Starting at **\$1120\***

All-inclusive style: **\$1715/  
month utilities/ furnished\***

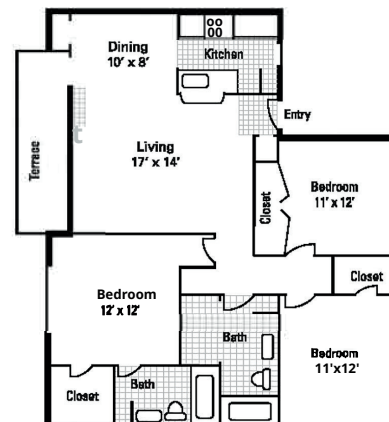


#### CYPRESS

2 Bedroom, 2 Bath  
1016 sq. ft.

Starting at **\$1260\***

**\$1090/room for an  
individual lease\***



#### WILLOW

3 Bedroom, 2 Bath  
1150 sq. ft.

Starting at **\$1375\***

17

## Solis at Winter Park

7502 Sun Key Boulevard, Winter Park, FL 32792  
+1.407.677.8884 +1.407.677.8233 fax

### AMENITIES

- Gated community
- Business center
- Media gaming center
- Designer interiors
- Stainless steel appliances
- Washer/dryer included in every apartment
- Water/sewer included
- 2 swimming pools
- 2 lighted tennis courts
- Lighted sand volleyball and basketball courts
- Several picnic and BBQ grills
- Jacuzzi
- State-of-the-art fitness facility
- 2 indoor racquetball courts
- Bike racks on property
- On-site courtesy officer
- Monthly resident activities
- Dog park

### LOCATION

Located off of Goldenrod Rd., 1 mile east of campus

### APPLICATION FEES

\$50 application fee per applicant and cosigner  
\$125 (non-refundable) administration fee

### PET DEPOSITS / FEES

\$400 (\$100 refundable) per pet  
Maximum 2 pets, no weight limit  
Breed restrictions apply  
\$15/month pet rent per pet

### ADDITIONAL INFORMATION

Vaulted ceilings: \$15/month  
Lake view: \$25/month  
Renters insurance is required  
Please call to ask about our specials

### WEBSITE AND EMAIL

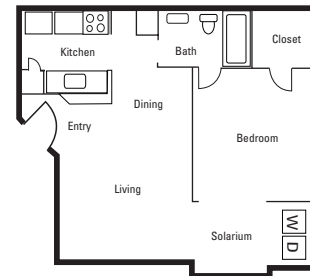
[www.sunkeyapts.com](http://www.sunkeyapts.com)  
[sunkey@greystar.com](mailto:sunkey@greystar.com)

### HOURS

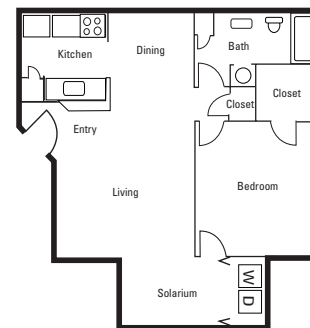
M-F 9 to 6, Sat 10 to 5, Sun 12 to 5

\*Prices change daily based on current market availability. Please call apartment staff for current pricing. Refer to important information section at the front of the guide.

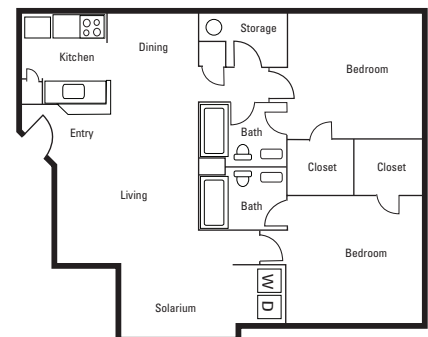
**EXECUTIVE**  
1 Bedroom, 1 Bath  
602 sq. ft.  
**\$1052-1489\***



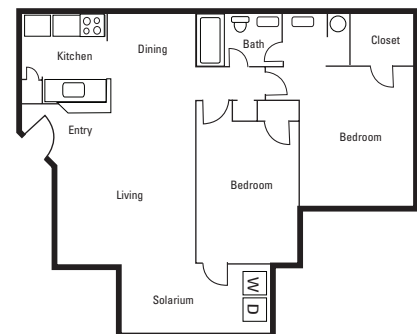
**DELUXE**  
1 Bedroom, 1 Bath  
713 sq. ft.  
**\$1088-1564\***



**TWO BEDROOM/SPLIT**  
2 Bedroom, 2 Bath  
1030 sq. ft.  
**\$1248-1783\***



**TWO BEDROOM**  
2 Bedroom, 1 Bath  
906 sq. ft.  
**\$1293-1811\***



18

## Stonecastle

2016 New Stonecastle Terrace, Winter Park, FL  
32792

+1.407.599.4120 +1.407.599.4121 fax

### AMENITIES

- Washer/dryer included
- Gated community
- Networked computer outlets
- 24-hour fitness studio
- Detached garages/storage available
- Picnic and barbecue area
- Resort-style pool
- 24-hour business center
- Planned resident activities
- Clubhouse with coffee café
- Tennis court
- Valet trash service
- Water/sewer not included in rent

### LOCATION

Located off of Greencastle Blvd., 2 miles north of campus

### APPLICATION FEES

\$50 per applicant  
\$35 per guarantor

### PET DEPOSITS / FEES

\$200 For first pet  
\$150 for second pet  
Additional rent: \$20/month ; \$10/month for second pet  
Up to 2 pets allowed per apartment home

### ADDITIONAL INFORMATION

Garages—\$75/month  
Additional storage—\$20/month  
Prices based on availability and are subject to change

Full Sail specials: \$100 off administrative fee;  
\$100 off security deposit

Renters insurance is required

Call apartment complex for specials

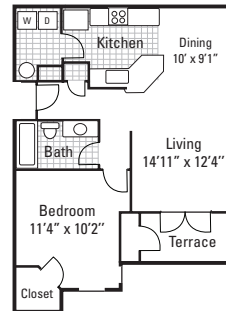
### EMAIL

stonecastle@bhmanagement.com

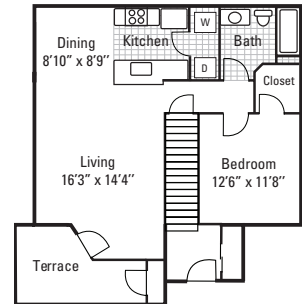
### HOURS

M–F 9 to 6, Sat 10 to 5, Sun 1 to 5

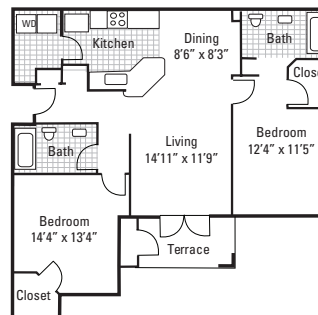
\*Prices change daily based on current market availability. Please call apartment staff for current pricing. Refer to important information section at the front of the guide.



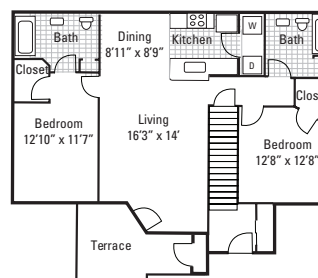
**THE ASHLAR**  
1 Bedroom, 1 Bath  
780 sq. ft.  
**Starting at \$955-1445\***



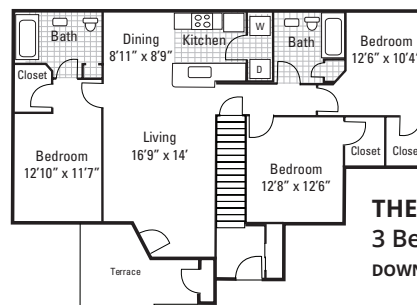
**THE BELFRY**  
1 Bedroom, 1 Bath  
DOWNSTAIRS: 760 sq. ft.  
**\$955-1142\***  
UPSTAIRS: 830 sq. ft.  
**\$1031-1484\***



**THE LANCE**  
2 Bedroom, 2 Bath  
1059 sq. ft.  
**\$1186-1637\***



**THE PALISDALE**  
2 Bedroom, 2 Bath  
DOWNSTAIRS: 1071 sq. ft.  
**\$1201-1700\***  
UPSTAIRS: 1141 sq. ft.  
**\$1236-1661\***



**THE CHESHIRE**  
3 Bedroom, 2 Bath  
DOWNSTAIRS: 1230 sq. ft.  
**\$1555-2006\***  
UPSTAIRS: 1330 sq. ft.  
**\$1454-1584\***



19

## Tealwood Parke

4704 Lucier Court, Winter Park, FL 32792  
+1.407.679.2555 +1.407.679.1289 fax

### AMENITIES

- Water/sewer included
- Washer/dryer in all homes
- Sparkling swimming pool
- Gourmet kitchen with large window
- Outside storage
- Private patios and balconies
- Private, sheltered entry

### LOCATION

Located off of Palmetto Rd., 1.4 miles east of campus

### APPLICATION FEES

\$50 per applicant

\$199 administrative/reservation fee

### PET DEPOSITS / FEES

\$300 (non-refundable) fee per pet,  
plus \$300 (refundable) pet deposit

Maximum 2 pets per household  
Combined weight limit of 50 lb.  
Breed restrictions apply

### ADDITIONAL INFORMATION

Vaulted ceilings—\$10/month

Lake view—\$30/month

Non-road view—\$10/month

Upgraded—\$30/month

Pond view—\$20/month

Wood laminate flooring—\$10/month

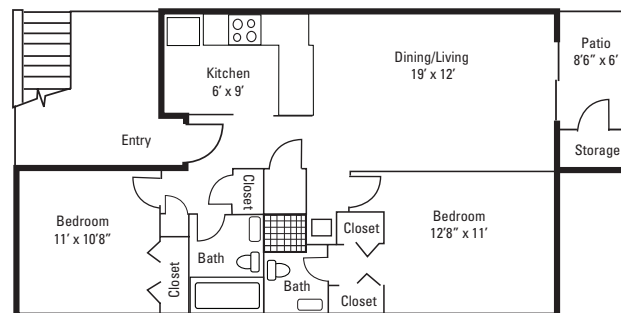
Call for specials or to make an appointment

### WEBSITE

[www.tealwoodparkeapartments.com](http://www.tealwoodparkeapartments.com)

### HOURS

M–Th 9 to 5:30, F 9 to 5, Sat 10 to 4, Sun Closed



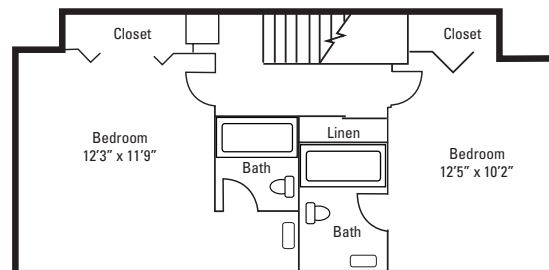
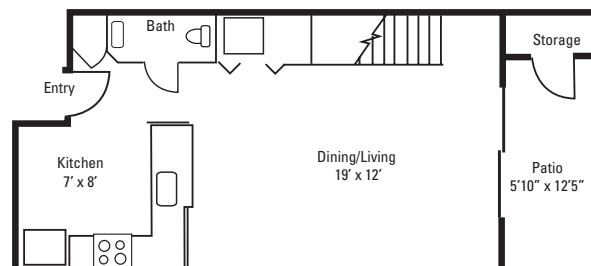
### GARDEN HOME

2 Bedroom, 2 Bath

910 sq. ft.

**\$1015-1066**

### FIRST FLOOR



### SECOND FLOOR

### TOWNHOME

2 Bedroom, 2½ Bath

958 sq. ft.

**\$1065-1125**

20

## Whisper Lake

3250 Whisper Lake Lane, Winter Park, FL 32792  
+1.407.677.0005 +1.407.677.0298 fax

### AMENITIES

- Grocery delivery service on property twice a month ([www.schwans.com](http://www.schwans.com))
- Game room
- Business center with printers and high-speed Internet
- Spectacular waterfront swimming pool
- Lighted tennis and racquetball courts
- Volleyball court
- 24-hour express maintenance
- 24-hour fitness center
- Washer/dryer connections in all 2-bedroom units
- 2 clothes care centers
- Basketball court
- Scenic views of the lake

### LOCATION

Located off of Semoran Blvd., 1 mile south of campus

### APPLICATION FEES

\$25 application fee for cosigners  
\$250 administration fee

### PET DEPOSITS / FEES

\$400 (non-refundable) fee  
Maximum 24 inches tall, breed restrictions apply  
Maximum 2 pets per unit

### ADDITIONAL INFORMATION

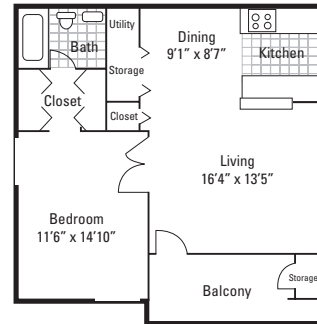
\$30-40 flat rate for water/sewer, depending on apartment size  
\$10 off monthly rent for Full Sail students

### WEBSITE AND EMAIL

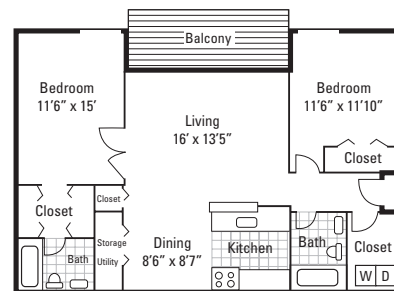
[www.liveatwhisperlake.com](http://www.liveatwhisperlake.com)  
[whisperlakeleasing@spm.net](mailto:whisperlakeleasing@spm.net)

### HOURS

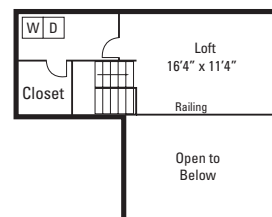
M-F 8:30 to 5:30, Sat 10 to 5, Sun 12 to 5



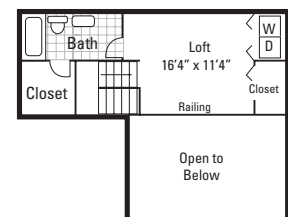
**GARDEN UNIT**  
1 Bedroom, 1 Bath  
750 sq. ft.  
**\$1105**



**GARDEN UNIT**  
2 Bedroom, 2 Bath  
1050 sq. ft.  
**\$1445**



**LOFT**  
2 Bedroom, 1 Bath  
1000 sq. ft.  
**\$1320**



**LOFT**  
2 Bedroom, 2 Bath  
1000 sq. ft.  
**\$1385**

# Title IX

Full Sail University complies with the guidelines and requirements of the Title IX, Educations Amendments of 1972 and has adopted procedures and policies to address allegations of sexual violence as outlined under Title IX. The university encourages any student who experiences sexual violence/harassment to report it and request appropriate interim measures and processes that provide access to the educational program without regard to sex. The university prohibits sexual violence/harassment occurring off campus, as well as on campus, in accordance with Title IX.

Title IX is a federal law that prohibits sex-based discrimination in all activities and programs of educational institutions receiving federal funds.

## Unlawful Discriminatory Behaviors Under Title IX

- **Sexual Harassment**  
(unwelcome sexual advances, requests for sexual favors, and other verbal or physical conduct of a sexual nature)
- **Sexual Misconduct**  
(rape, sexual assault, sexual battery, sexual exploitation, and other forms or non-consensual sexual activity)
- **Stalking**  
(repeatedly following, harassing, threatening or intimidating including by telephone, mail, electronic communication, or social media)
- **Dating Violence**  
(including emotional, verbal, and economic abuse without the presence of physical abuse)
- **Domestic Violence**  
(including emotional, verbal and economic abuse without the presence of physical abuse)
- **Retaliation**  
(adverse employment, academic, or other action against anyone reporting or participating in an investigation of Title IX allegations)

## Reporting

Members of the university community who believe that a title IX violation may have occurred should discuss their concerns and/or file a complaint with the university's Title IX Coordinator:

***Shayne Cade, Director of Compliance & Title IX Coordinator***

3300 University Boulevard, Winter Park, FL 32792  
407.679.0100  
scade@fullsail.com

University Title IX deputy Coordinators are:

***Debbie Mills, Director of Student Affairs***

3300 University Boulevard  
Winter Park, FL 32792  
dmills@fullsail.com

***Debby Wiskus, Director of Human Resources***







## FULL SAIL UNIVERSITY

Near Orlando, FL • Tel: +1.407.679.6333 • [fullsail.edu](http://fullsail.edu)  
3300 University Boulevard, Winter Park, FL



Financial aid available for those who qualify • Career development assistance • Accredited University, ACCSC

To view consumer disclosures, please visit [fullsail.edu/gedt](http://fullsail.edu/gedt).

© 2018 Full Sail, LLC. All rights reserved. The terms "Full Sail," "Full Sail University," and the Full Sail University logo are either registered service marks or service marks of Full Sail, LLC.

FEB2018